



63rd Grand Chapitre de Grande Bretagne
Warwickshire, 27 September – 1 October 2023

**WONDERFUL
WARWICKSHIRE**



63rd Grand Chapitre de Grande Bretagne Warwickshire, 27 September – 1 October 2023

Dear Members, Chers Confrères, Chères Consoeurs

It is with great pleasure that we invite you to join us for Chaîne GB's 63rd Grand Chapitre in Warwickshire – the Heart of England. The area is known for its delightful countryside, modern cities such as Birmingham and Coventry, historic Stratford-upon-Avon, many grand estates and home to Warwick Castle. Our programme covers all these attributes.

The programme starts on Wednesday with an informal dinner at Baraset Barn, followed on Thursday by an absolutely unique visit to Aston Martin, maker of fantastic sports cars and Formula 1 racing cars. That evening, our Diner Amical is in Number 44 Brasserie in Stratford-upon-Avon. The next day members have the option of two great trips. The first to the Severn Valley Railway, a heritage line running close to the River Severn, and the second a tour of the highlights and history of the city of Birmingham. That evening, the Welcome Dinner will be held in the Crowne Plaza right on the River Avon.

On Saturday, members again have two optional trips – a visit to the well-known Warwick Castle, or the steam-powered Hook Norton Brewery. Our Induction Ceremony will precede the Gala Dinner at the world-famous golfing resort of The Belfry. Set in hundreds of acres of manicured grounds with three championship courses this is a delightful venue, with options available for golfers during or after the Grand Chapitre.

On behalf of our members, I am delighted to welcome Daniel Jaggi as our Inducting Officer. He is the Bailli Délégué of Liechtenstein and a member of the Conseil Magistral.

Providing encouragement and help to the less fortunate in life, particularly in the hospitality industry, is one of our charitable aims and we will celebrate this with a grand raffle at the Gala Dinner in support of The Clink.

In the Chaîne tradition the teams in all these venues have planned great menus reflecting both location and time of year and you are ensured to leave saying 'wow'.

We look forward to giving you all the warmest of welcomes, together with your guests, to a long weekend of cultural interest, culinary and vinous excellence and, most of all, great camaraderie. This event is above all a meeting of friends to share experiences together.

Vive la Chaîne



Philip Evins
Bailli Délégué
Membre du Conseil Magistral



Darryl Thomson
Chancelier



David Edwards
Argentier





For 150 years, Zwiesel Glas has been producing the very best glassware

Our stem and barware is preferred by many professional establishments because of its superior refinement, design and durability.

SIMPLIFY is an ultra-fine, mouth-blown range for discerning wine lovers. SIMPLIFY was designed to work with a wine's characteristics, so each glass can be used to serve red, white or rose wines. An innovative approach that has won two design awards.

Our aim is to enhance your pleasure by providing superb stem and barware. We have solutions for wine, cocktails, beers and soft drinks.



ADIT is a supporter of the Chaine des Rotisseurs Young Sommeliers Competition.

For more information: please visit www.aditrading.com/Simplify
or email sales@aditrading.com

PROGRAMME HIGHLIGHTS

Stratford-upon-Avon

The base for the Grand Chapitre will be Shakespeare's home town for the event and we have been able to reserve rooms in two wonderful boutique hotels, The Arden and the Indigo. We stay in the centre of the town and one can walk to all the important venues. In your spare time explore this most historic of towns at the very heart of England. Nearby are also many attractions including the National Trust's Charlecote Hall, just outside the town, plus the National Motor Museum, National Motor Cycle Museum, and lots more.



TRAVEL

By road

From the south A34 to the M40. Leave at Junction 15 Warwick. Turning south on the A46.

From London

Take the M40 Leave at Junction 15 Warwick. Turning south on the A46.

From the North West / Scotland

Take the M6 then the M42 and finally M40 before joining the A46 at Junction 15.

By Bus

From London Victoria station with National Express approx. 3 hrs.

By Air

From Birmingham Airport. By road take the M42 and then M40 south before joining the A46 at Junction 15. Journey time approx. 40 minutes.

Alternatively, take a taxi approx. fare £40

By Rail

Trains from London Marylebone to Stratford-Upon-Avon station.

Chilterns Railway trains to Stratford-upon-Avon depart from London Marylebone every 60 minutes. The journey is just under 2 hours.

Thursday 28 September

ASTON MARTIN

This is a very rare opportunity for a limited number to visit this world-famous sports car and Formula 1 car manufacturer. This has been made possible by the personal invitation of Marek Reichman, Executive Vice President and Chief Creative Officer.

The visit starts with a factory tour in small groups to see these hand-built and highly personalised cars. Following on will be a design workshop led by Marek. This is an eye opener to how we react to shapes, sizes, proportions and colours. A light lunch follows at The Antelope in nearby village of Lighthorne.





DINER AMICAL No. 44 BRASSERIE ON THE WATERSIDE

Our Diner Amical takes place at this award-winning restaurant situated in the heart of Stratford-upon-Avon at the Arden Hotel. A private terrace overlooks the River Avon and, if the weather is fine, this is where we will meet to enjoy pre-dinner drinks with Chaîne friends.

Friday 29 September SEVERN VALLEY RAILWAY TOUR AND LUNCH

One of the best-known heritage railways in Britain, this standard gauge line runs from Kidderminster to Bridgnorth following the course of the River Severn, along the beautiful Severn Valley, for much of its route. The train crosses the river on the historic Victoria Bridge. It is considered 'a must' by rail enthusiasts. Watch stunning countryside whilst relaxing in your seat.

Train services are hauled by a mixture of steam and heritage diesel locomotives. Our trip takes place on Gala Day marking the end of the 2023 season. Having travelled through some beautiful Worcestershire and Shropshire countryside we shall enjoy a riverside lunch at The Boatyard before returning to Kidderminster.



CITY TOUR AND GUIDED WALK OF BIRMINGHAM

Come on a tour of discovery and surprises around Britain's second city – Birmingham. From industrial history and canals, more than in Venice, to more trees and parks than you might imagine. Birmingham's story encompasses entrepreneurs, benefactors, reformers, and an unrivalled ability to adapt to changing circumstances. Cars, jewellery, chocolate, runs and people who changed the world all get a look-in. Our tailor-made tour will be conducted by Ian Jelf, a local Brummie and full-time professional tourist guide who holds the Blue Badge official tourist guiding qualification. The tour will be initially by coach and then on foot. We shall conclude with lunch at the canal-side Bank Restaurant.

Image: Birmingham Updates / Brindleyplace

WELCOME DINNER AT THE CROWNE PLAZA

This stunning modern riverside hotel set amid landscaped gardens beside the River Avon is just a short walk from the town centre and walking distance from either hotel. Our dinner will be held in the Charlecote and Harewood Suite. The brigade is led by Executive Chef Ian Heffernan and we can be assured that the experienced restaurant team will strive to deliver an unforgettable dining experience for us.



© Photo by Michelle Radch



Saturday 30 September

WARWICK CASTLE VISIT AND LUNCH

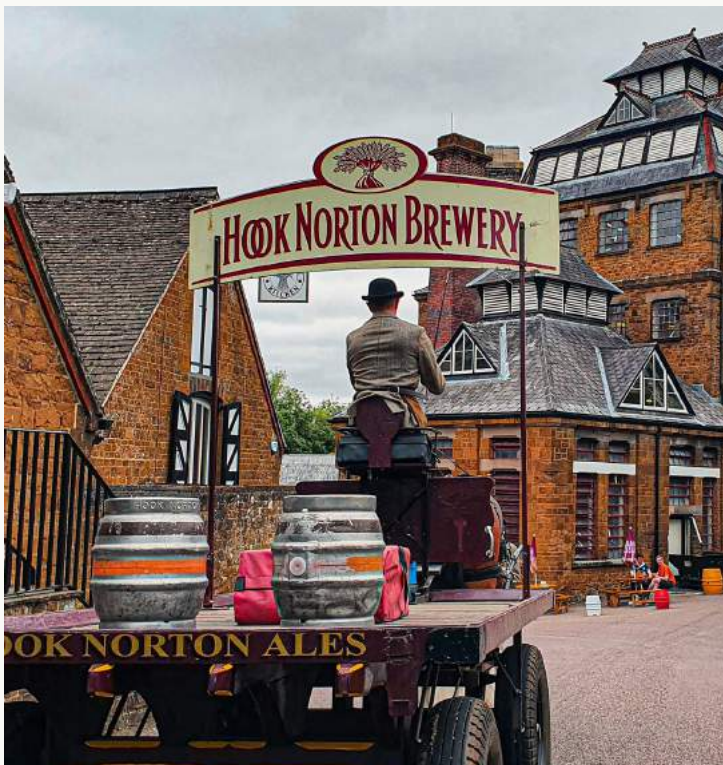


Built by a king, William The Conqueror, in 1068, Warwick Castle has been the seat of kingmakers and vital stronghold in the Wars of the Roses and the English Civil War. It has been the seat of the Earls of Warwick for over 900 years. Playing an important role in British history, it is one of the most dramatic and complete medieval castles in the country and has been inhabited continuously since the Middle Ages.

Today, visitors can tour the castle and its grounds learning about its history and enjoying its architecture.

Lunch will be at the Hatton Arms, set in glorious Warwickshire countryside on the Hatton Estate. Here you may want to see the fabulous Hatton Locks, a flight of 21 locks on the Grand Union Canal.

HOOK NORTON BREWERY TOUR AND LUNCH

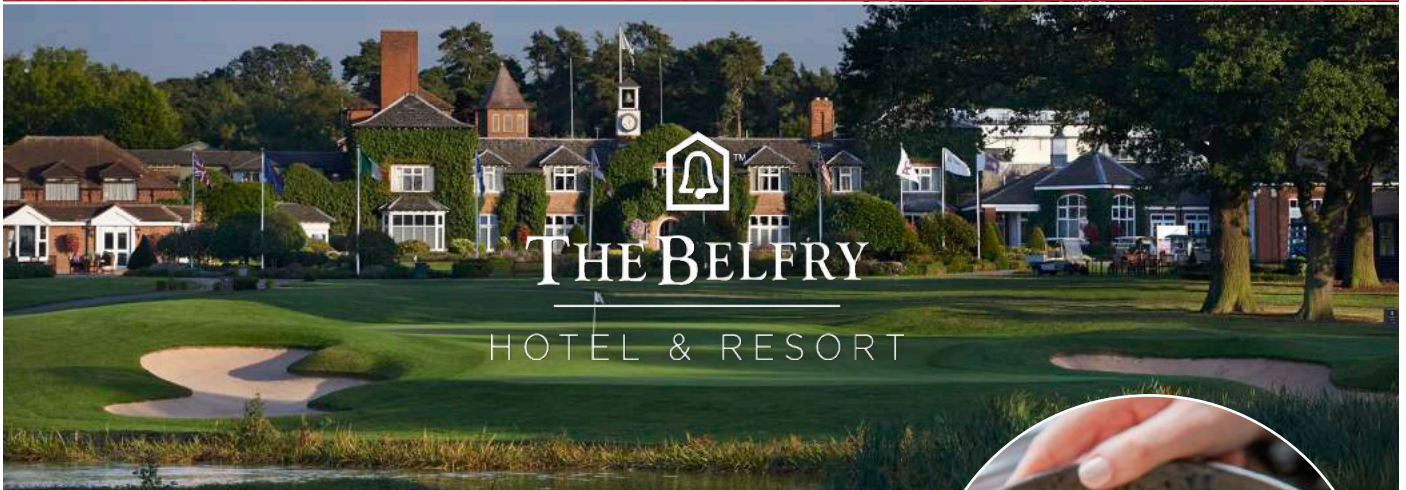


Located in the beautiful, mellow Cotswold Hills landscape, Hook Norton is the finest example of a Victorian tower brewery in the country. Our tour of this working steam powered brewery allows visitors to experience the sight and sounds of brewing the Hooky way. There will also be an opportunity to see the magnificent shire horses that still deliver beer to the surrounding villages. Then a gentle five minute walk to The Sun Inn for lunch.

Please note

- *Sensible footwear recommended*
- *Visit not suitable for those with mobility problems as there are steep stairs to negotiate*

INDUCTION & GALA DINNER IN THE WOODLANDS SUITE AT THE BELFRY



The award-winning Belfry Hotel & Resort is a Heart of England special place, situated in over 500 acres of beautifully manicured grounds on the edge of Royal Sutton Coldfield. It is renowned for its three legendary golf courses, most famously The Brabazon. The Belfry has hosted The Ryder Cup four times – more than any other venue in the world.

Our dinner will take place in the Woodlands Suite following the Induction Ceremony. We shall be in the capable hands of Executive Head Chef, Robert Bates, whose long CV includes several Michelin-starred restaurants in both the United Kingdom and Europe.



Inducting Officer Daniel Jaggi, Bailli Delegeue Honoraire de Liechtenstein, Membre de Conseil Magistral

It is a great honour for me to act as Maître de Cérémonie on behalf of our President Yam Atallah here in this beautiful and historic landscape. The induction of new members and the promotion of long-serving members of our fraternity is the highlight of every Grand Chapitre. This solemn act in a county with the famous Warwick Castle and especially in Stratford-upon-Avon, the birthplace of William Shakespeare, truly has a special significance.

It is thanks to Bailli Délégué Philip Evins with his Comité national we are able to enjoy an extremely attractive programme during these days. A lot of work and attention to detail went into the preparations for the beautiful excursions and the certainly great dinners and there is no doubt at all that the events will be conducted in a highly professional manner.

I wish you all a fantastic Grand Chapitre in Warwickshire which will certainly find its way into the memoirs of our members.

Daniel Jean-Marie Jäggi-Lind



‘Changing attitudes, transforming lives and creating second chances’

The Clink Charity works in partnership with Her Majesty's Prison and Probation Service to deliver 30 training projects: 4 restaurants, 3 gardens, 1 events catering business and 22 prison kitchens.

All projects utilise our five step integrated programme to ensure that prisoners receive the support they need, not only while they are in prison, but also after release: we recruit, train, support, find employment and mentor our graduates post release.

The Clink is Chaîne GB's chosen Charity and we support it through raffles at major events, donations, taking meals at Clink restaurants and through assistance provided by our professional members.



To find out more about making a donation to support The Clink Charity's work, please visit:

www.theclinkcharity.org

Sunday 1 October



FAREWELL LUNCH AT THE BOAT HOUSE, STRATFORD-UPON-AVON

This riverside bistro and bar is just a stone's throw from the centre of Stratford on the south side of the river with superb views from the dining balcony. This is a prime spot for relaxing and watching the world go by on the river whilst enjoying wonderful food and drink. Also, of course, the wonderful Chaîne camaraderie and where we can say au revoir until next year.





PROGRAMME

Wednesday 27 September to Sunday 1 October



REGISTER ONLINE

www.chaine.co.uk/grand-chapitre/register



REGISTRATION

(£30/person)

Please note ALL to check-in at the Welcome Desk in the Arden Hotel Lobby

Thursday	15.00 – 17.00
Friday	09.00 – 17.30
Saturday	09.00 – 15.00

WEDNESDAY 27 SEPTEMBER

Baraset Barn Dinner, Stratford-upon-Avon

(£80/person)

Individual travel or by taxi (10 minutes)

20.00 Dinner at Baraset Barn

Dress code: Smart Casual

THURSDAY 28 SEPTEMBER

Aston Martin Factory and Design Studio Tour & Lunch

(£100/person. Price inclusive of bus transport)

Places are limited.

Preference will be given to members signing up for the majority of the weekend. (Friday and Saturday dinners minimum)

09.30	Bus leaves for Aston Martin
10.00	Factory Tour
12.00	Design briefing
13.00	Lunch in The Antelope, Lighthorne
14.30	Depart
15.00	Arrive at Hotel

Dress code: Smart Casual

Dîner Amical – No. 44 Brasserie, The Arden Hotel, Stratford-upon-Avon

(£110/person)

Walk from hotels

19.15	Reception in courtyard
20.00	Dinner
22.30	Depart

Dress code: Jackets (ties optional) with Chaîne ribbons

FRIDAY 29 SEPTEMBER

Severn Valley Railway & Lunch*

(£90/person. Price inclusive of bus transport)

09.30	Bus leaves Arden Hotel
10.45	Arrive at Severn Valley Railway, Kidderminster Station
12.30	Lunch in The Boatyard, Bridgnorth
14.00	Return train journey
15.15	Depart
16.30	Arrive at hotel

Dress code: Casual

Birmingham Guided Tour & Lunch*

(£70/person. Price inclusive of bus transport)

09.45	Bus leaves Arden Hotel
10.30	Arrive in Birmingham
12.30	Lunch in Bank, Brindley Place
14.30	Depart
15.20	Arrive at hotel

Dress code: Casual

** Please note: Friday events run concurrently, so it won't be possible to attend both events on this day.*



PROGRAMME

Wednesday 27 September to Sunday 1 October

Welcome Dinner — Crowne Plaza, Stratford-upon-Avon

(£160/person)

19.15	Reception
20.00	Dinner
23.15	Depart

Dress code: Business suits with Chaîne ribbons

Gala Dinner — Woodlands Suite at The Belfry

(£180/person. Price inclusive of bus transport)

18.30	Bus leaves the Arden Hotel
19.15	Arrive at The Belfry
19.15	Reception
20.00	Dinner
23.15	Depart

Dress code: Black tie and evening dresses with Chaîne ribbons

SATURDAY 30 SEPTEMBER

Warwick Castle Visit & Lunch[†]

(£90/person. Price inclusive of bus transport)

09.30	Bus leaves the Arden Hotel
10.00	Arrive at Warwick Castle
12.30	Lunch in The Hatton Arms
14.30	Depart
15.00	Arrive at Hotel

Dress code: Smart casual

Hook Norton Brewery Tour & Lunch[†]

(£90/person. Price inclusive of bus transport)

09.00	Bus leaves the Arden Hotel
10.00	Arrive at Hook Norton
12.15	Lunch in The Sun Inn
14.00	Depart
14.45	Arrive at Hotel

Dress code: Smart casual

Induction Ceremony — Woodlands Suite at The Belfry

(£15/person. Price inclusive of bus transport)

17.15	Bus leaves Arden Hotel
18.00	Arrive at The Belfry
18.30	Induction Ceremony
19.15	Reception

Dress code: Black tie and evening dresses with Chaîne ribbons

SUNDAY 1 OCTOBER

Farewell Lunch — The Boat House, Stratford-upon-Avon

(£90/person)

Walk from hotels

12.30	Drinks
13.00	Lunch
15.30	Depart

Dress code: Smart casual with Chaîne ribbons

End of the Grand Chapitre

We wish you a safe journey home and look forward to seeing you next year, 4-7 July in Glasgow



[†] Please note: Saturday events run concurrently, so it won't be possible to attend both events on this day.



THE ARDEN HOTEL

Located in the heart of historic Stratford-upon-Avon, Shakespeare's birthplace, and directly opposite the world-renowned Royal Shakespeare Company Theatres, The Arden Hotel, Stratford is an elegant and sophisticated 45-bedroom boutique hotel. The star of Stratford-upon-Avon's hotel scene and set in an unrivalled town centre location with parking and electric car charging points, The Arden combines luxurious accommodation with all the comforts you would expect from a sophisticated and contemporary boutique hotel including our all-weather terrace, cosy afternoon tea lounge and award-winning No. 44 Brasserie.

theardenhotelstratford.com



THE ARDEN HOTEL CHAÎNE ROOM RATES

Double occupancy

- Wed/Thurs – £150 per night across all types of room
- Fri/Sat – £190 per night across all types of room

Single occupancy

- Wed/Thurs – £135 per night across all types of room
- Fri/Sat – £150 per night across all types of room



*These include breakfast and free parking and include VAT.
They are applicable to any contiguous stays before or
after the Grand Chapitre.*

LOCATION & BOOKINGS

The Arden Hotel
Waterside
Stratford-upon-Avon
Warwickshire
CV37 6BA

Book by phone or email quoting the Chaîne:

T: +44 (0) 1789 298682

E: info@theardenhotelstratford.com

PARKING

The hotel car park is free to residents and is accessed from Chapel Street, a one way street. Post Code is different to the hotel: CV37 6BE



Directions

By Car

Sat Nav: CV37 6BE

From The North

Head southeast on M40. At junction 15, take the A46/A429 exit to Stratford/Warwick. At the roundabout, take the 1st exit onto, and continue along, the Stratford Rd (A46). At the roundabout, take the 1st exit onto Birmingham Rd (A3400). Follow signs into Stratford Town Centre. At Barclays bank roundabout, take the 1st exit onto High Street merging to Church Street, then take the 2nd left into Chapel Lane. The Arden Hotel is signposted on your right.

From The South

Head northwest on M40. At junction 15, take the A46/A429 exit to Stratford/Warwick. At the roundabout, take the 1st exit onto, and continue along, the Stratford Rd (A46). At the roundabout, take the 1st exit onto Birmingham Rd (A3400). Follow signs into Stratford Town Centre. At Barclays bank roundabout, take the 1st exit onto High Street merging to Church Street, then take the 2nd left into Chapel Lane. The Arden Hotel is signposted on your right.

By Train

Nearest Train Station: Stratford-upon-Avon.





stratford.hotelindigo.com

HOTEL INDIGO

This hotel is situated a short walk from the Arden Hotel also in the heart of Stratford-on-Avon. A very individual hotel which showcases the tradition of the 16th century building, once The Falcon Inn, the charm of the Georgian Townhouse and the modern contemporary wing. Rooms are stylish and sophisticated with Hypnos beds with Egyptian cotton linen, and spa-inspired bathrooms. One can recognise links to the Bard and reflections of Stratford's heritage throughout the design of the hotel rooms, restaurant and bar. It is part of the IHG group of hotels.



HOTEL INDIGO CHAÎNE ROOM RATES

Standard rooms

- Double occupancy £192 per night
- Single occupancy £177 per night

Premium Queen/Twin

- Supplement £35 per night

Premium King

- Supplement £65 per night

Suites

- Supplement £95 per night

These include breakfast and free parking and include VAT. They are applicable to any contiguous stays before or after the Grand Chapitre. Upgrades subject to availability.



LOCATION & BOOKINGS

Hotel Indigo
Chapel Street
Stratford-upon-Avon
Warwickshire
CV37 6HA

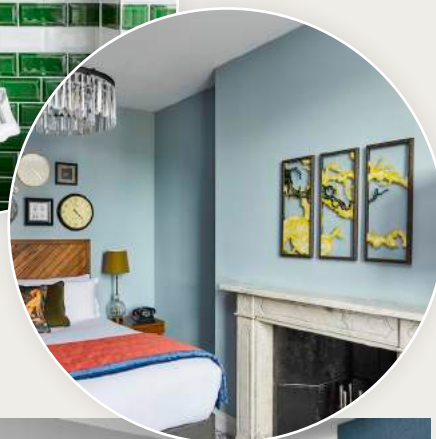
Book by phone or email quoting the Chaîne:

T: +44 (0) 1789 279953

E: mary.ireland@stratford.hotelindigo.com

PARKING

There is limited car parking for residents charged at £12.50 per car per night. Available on first come first served basis.





With thanks to our Donors who support Chaîne GB throughout the year



SAMAC

Macadamias South Africa NPC



ZWIESEL
GLAS



64th Grand Chapitre de Grande Bretagne

4-7 July in the city of Glasgow

www.chaine.co.uk